

NATIONAL STOCK EXCHANGE OF INDIA LIMITED

DEPARTMENT : CAPITAL MARKET SEGMENT

Download Ref No : NSE/ CMTR/32642	Date : June 24, 2016
Circular Ref. No : 37/2016	

All Members,

Live trading sessions from Disaster Recovery (DR) site

The Exchange shall be conducting trading sessions (Mock & Live) from its **Disaster Recovery (DR)** site. The schedule for the same is given below:

Date	Trading sessions	Location & Configuration	Schedule & Instructions
Jul 02, 2016	Mock Trading	Disaster Recovery (DR) TAP configuration (Annexure 1)	Annexure 2
Jul 04, 2016	Live Trading		Annexure 3
Jul 05, 2016			
Jul 07, 2016	Live Trading	Primary site TAP configuration (Annexure 4)	-

In view of the same, members may kindly note that the **Contingency drill/ mock trading** scheduled on July 02, 2016 (as intimated through exchange circular no. NSE/CMTR/31305 dated December 08, 2015) has been **re-scheduled** to July 09, 2016.

Important instruction for members:

- **Kindly participate actively in the mock trading session to check the connectivity and to avoid login problems in live trading sessions from DR site.**
- Members are requested to refer to **Annexure 5** for parameters to Login without TAP (Direct)
- The Connect2NSE and Extranet facility will not be available for members
 - From 10 pm on Friday, July 01, 2016 to 07:00 am on Sunday, July 03, 2016.
 - From 10 pm on Tuesday, July 05, 2016 to 07:00 am. on Thursday, July 07, 2016
- Vsat/Lease-line members are requested to connect to below mentioned IP address for Extranet from July 02, 2016 to July 05, 2016.
 - Extranet - 172.18.125.71
- Co-location facility and Tick by Tick (TBT) feed shall be available. For Co-location, TBT feed will be available on the same Production IP's.
- New/revised announcements with respect to mock trading on July 02, 2016 and live trading on July 04, 2016 and July 05, 2016, if any, shall be available on the website www.nseindia.com.

- In case of any queries please call Toll Free no: 1800 266 0053.

**For and on behalf of
National Stock Exchange of India Limited**

**Khushal Shah
Chief Manager**

Toll Free No	Fax No	Email id
1800 266 0053	+91-22-26598155	msm@nse.co.in

Annexure – 1

TAP configuration for login to DR site on the following days:

1. **Saturday, July 02, 2016 (for mock trading session)**
2. **Saturday, July 02, 2016 (for relogin session)**
3. **Monday, July 04, 2016 (for live trading session)**
4. **Tuesday, July 05, 2016 (for live trading session)**

a. INTEGRATED WINDOWS TAP CONFIGURATION

- 1) Start TCMS.
- 2) Under the menu bar, select the TAB named 'TAP'.
- 3) Go to TAP Configuration and select the market segment you want to configure.
- 4) In the configuration dialog, selecting 'BCP' Radio Button, your screen will look like this:

FO - Configuration

Broker ID : 18

TAP Configuration

Box ID : 18

Local IP : 172 . 17 . 16 . 174

WAN IP : 172 . 17 . 16 . 174

TAP Port : 9602

FIX Port : 9652

Host Configuration

Primary BCP DEV

TAP will connect to BCP Environment.

Save Exit

- 5) On Save click, under BCP
Prompt below is just a confirmation asked when respective TAP is running.

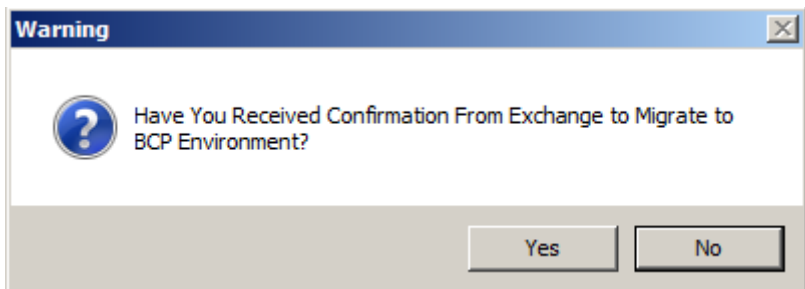
Warning

TAP will restart to take changes into effect. Do you want to continue?

Yes No

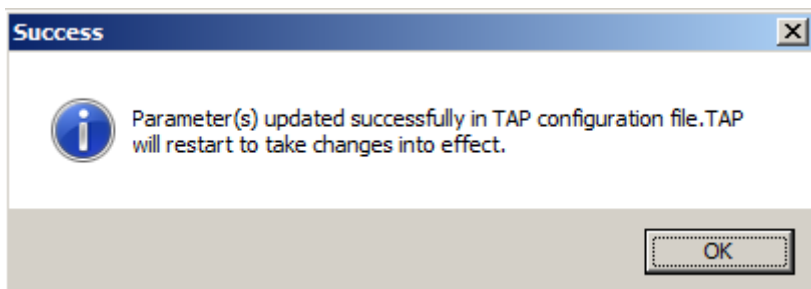
Select 'Yes'

6) Confirmation to save configuration for BCP environment.



Select 'Yes'

7) On successful modification, TCMS user will get a response “**Parameter(s) updated successfully in Tap configuration file**” for that particular market as shown in the fig. below. Thus indicating that the changes made are reflected correctly.



b. INTEGRATED LINUX TAP CONFIGURATION

- 1) Start the TCMS.
- 2) Select option TAP configuration Menu.
- 3) Then select particular market type, in which you want to make the changes (e.g CM).
- 4) To connect to BCP environment please select the option 'Switch to BCP Configuration'

```
***** [ TAP CM Configuration Menu ] *****

Broker ID.....[1234]

1. Local IP.....[172.17.16.253]
2. WAN IP.....[172.17.16.253]
3. Box ID.....[33]
-. TAP Port.....[9601] (Not Configurable).
-. FIX Port.....[9651] (Not Configurable).
-. PRIMARY Configuration.          [Current Configuration].
6. Switch to BCP Configuration.
7. Switch to Development Configuration.
8. Connection Type.[Lease Line]
9. Change Broker_ID.
-. Save.
-. Save & exit.
0. Exit.
*****

Enter parameter number to modify : 6

Have You Received Confirmation From Exchange to Migrate to BCP Environment.

Do you want to continue (Y/N)? : y

***** [ TAP CM Configuration Menu ] *****

Broker ID.....[1234]

1. Local IP.....[172.17.16.253]
2. WAN IP.....[172.17.16.253]
3. Box ID.....[33]
-. TAP Port.....[9601] (Not Configurable).
-. FIX Port.....[9651] (Not Configurable).
5. Switch to Primary Configuration.          [Current Configuration].
-. BCP configuration.*
7. Switch to Development Configuration.
8. Connection Type.[Lease Line]
9. Change Broker_ID.
10. Save.
11. Save & exit.
0. Exit without saving.
*****
```

5) Then select 'Save' or 'Save & Exit'

```
***** [ TAP CM Configuration Menu ] *****

Broker ID.....[1234]

1. Local IP.....[172.17.16.253]
2. WAN IP.....[172.17.16.253]
3. Box ID.....[33]
-. TAP Port.....[9601] (Not Configurable).
-. FIX Port.....[9651] (Not Configurable).
5. Switch to Primary Configuration.      [Current Configuration].
-. BCP configuration.*
7. Switch to Development Configuration.
8. Connection Type.[Lease Line]
9. Change Broker_ID.
10. Save.
11. Save & exit.
0. Exit without saving.
*****

Enter parameter number to modify : 10

Parameter(s) updated successfully in TAP configuration file.

***** [ TAP CM Configuration Menu ] *****

Broker ID.....[1234]

1. Local IP.....[172.17.16.253]
2. WAN IP.....[172.17.16.253]
3. Box ID.....[33]
-. TAP Port.....[9601] (Not Configurable).
-. FIX Port.....[9651] (Not Configurable).
5. Switch to Primary Configuration.
-. BCP configuration.      [Current Configuration].
7. Switch to Development Configuration.
8. Connection Type.[Lease Line]
9. Change Broker_ID.
-. Save.
-. Save & exit.
0. Exit.
*****
```

Members are requested to verify following "Route" entries on their TAP server to ensure successful login at BCP site.

Network Address	Netmask	Gateway Address
172.18.0.0	255.255.0.0	<gateway>

- Gateway address IP must be - TAP IP minus 1, which means, the last digit of the IP minus 1. Example:- If TAP Server IP is 10.222.10.2 then Gateway IP should be 10.222.10.1.

Annexure – 2

Schedule and Important instructions for Mock trading session on Saturday, July 02, 2016

Saturday, July 02, 2016	Start Time	End Time
Pre Open*	10:00 hrs	10:08 hrs
Normal Market/Odd lot	10:15 hrs	15:30 hrs
Block deal session	10:15 hrs	10:50 hrs
Call Auction Illiquid session (5 sessions of 1 hour each)*	10:30 hrs	15:30 hrs
Auction Market	14:00 hrs	15:15 hrs
Closing Session	15:40 hrs	15:50 hrs
Re-Login time	17:30 hrs	18:00 hrs

* Random closure in last one minute

Important instruction for members:

- Trades resulting from mock trading session on Saturday, July 02, 2016 shall not attract any obligation in terms of funds and/or securities pay-in and/or pay-out. Kindly do not transfer any data files for this session.

Annexure – 3

Schedule for live trading sessions on Monday, July 04, 2016 and Tuesday, July 05, 2016

Regular Market Timing (there is no change to this)	Start Time	End Time
Pre Open*	9:00 hrs	9:08 hrs
Normal Market/Odd lot	9:15 hrs	15:30 hrs
Block deal session	9:15 hrs	9:50 hrs
Call Auction Illiquid session (6 sessions of 1 hour each)*	9:30 hrs	15:30 hrs
Closing Session	15:40 hrs	16:00 hrs

* Random closure in last one minute

Annexure – 4

TAP configuration for login to Primary site on Thursday, July 07, 2016.

- Members are required to select the “Primary” radio button in TAP configuration parameters screen & save the same before login on Thursday, July 07, 2016.
- The configuration screen is shown below (Example):

a. INTEGRATED WINDOWS TAP CONFIGURATION

- 1) Start TCMS.
- 2) Under the menu bar, select the TAB named ‘TAP’.
- 3) Go to TAP Configuration and select the market segment you want to configure.
- 4) In the configuration dialog, selecting “Primary” Radio Button, your screen will look like this:

FO - Configuration

Broker ID : 18

TAP Configuration

Box ID : 18

Local IP : 172 . 17 . 16 . 174

WAN IP : 172 . 17 . 16 . 174

TAP Port : 9602

FIX Port : 9652

Host Configuration

Primary BCP DEV

TAP will connect to Primary Environment.

Save Exit

- 5) On Save click,
Prompt below is just a confirmation asked when respective TAP is running.

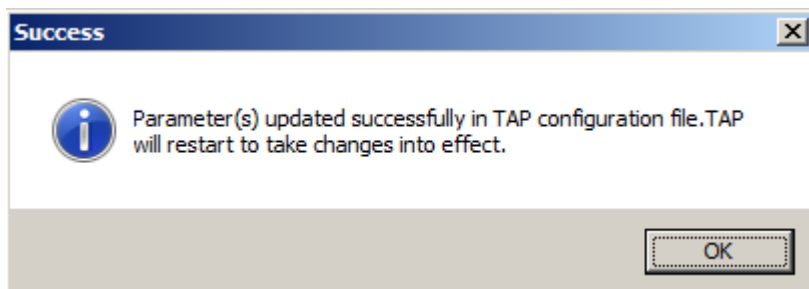
Warning

TAP will restart to take changes into effect. Do you want to continue?

Yes No

Select ‘Yes’

- 6) On successful modification, TCMS user will get a response “**Parameter(s) updated successfully in Tap configuration file**” for that particular market as shown in the fig. below. Thus indicating that the changes made are reflected correctly.



b. INTEGRATED LINUX TAP CONFIGURATION

- 1) Start the TCMS.
- 2) Select option TAP configuration Menu.
- 3) Then select particular market type, in which you want to make the changes
- 4) To connect to Primary environment please select the option 'Switch to Primary Configuration'

```
***** [ TAP CM Configuration Menu ] *****

Broker ID.....[1234]

1. Local IP.....[172.17.16.253]
2. WAN IP.....[172.17.16.253]
3. Box ID.....[33]
-. TAP Port.....[9601] (Not Configurable).
-. FIX Port.....[9651] (Not Configurable).
5. Switch to Primary Configuration.
-. BCP configuration. [Current Configuration].
7. Switch to Development Configuration.
8. Connection Type.[Lease Line]
9. Change Broker_ID.
-. Save.
-. Save & exit.
0. Exit.
*****

Enter parameter number to modify : 5

***** [ TAP CM Configuration Menu ] *****

Broker ID.....[1234]

1. Local IP.....[172.17.16.253]
2. WAN IP.....[172.17.16.253]
3. Box ID.....[33]
-. TAP Port.....[9601] (Not Configurable).
-. FIX Port.....[9651] (Not Configurable).
-. PRIMARY Configuration.*
6. Switch to BCP Configuration. [Current Configuration].
7. Switch to Development Configuration.
8. Connection Type.[Lease Line]
9. Change Broker_ID.
10. Save.
11. Save & exit.
0. Exit without saving.
*****
```

- 5) Then select 'Save' or 'Save & Exit'.

***** [TAP CM Configuration Menu] *****

Broker ID.....[1234]

1. Local IP.....[172.17.16.253]
2. WAN IP.....[172.17.16.253]
3. Box ID.....[33]
- . TAP Port.....[9601] (Not Configurable).
- . FIX Port.....[9651] (Not Configurable).
- . PRIMARY Configuration.*
6. Switch to BCP Configuration. [Current Configuration].
7. Switch to Development Configuration.
8. Connection Type.[Lease Line]
9. Change Broker_ID.
10. Save.
11. Save & exit.
0. Exit without saving.

Enter parameter number to modify : 10

Parameter(s) updated successfully in TAP configuration file.

***** [TAP CM Configuration Menu] *****

Broker ID.....[1234]

1. Local IP.....[172.17.16.253]
2. WAN IP.....[172.17.16.253]
3. Box ID.....[33]
- . TAP Port.....[9601] (Not Configurable).
- . FIX Port.....[9651] (Not Configurable).
- . PRIMARY Configuration. [Current Configuration].
6. Switch to BCP Configuration.
7. Switch to Development Configuration.
8. Connection Type.[Lease Line]
9. Change Broker_ID.
- . Save.
- . Save & exit.
0. Exit.

Annexure – 5

Parameters to Login without TAP (Direct)

A. Configuration for login to DR site on the following days:

1. Saturday, July 02, 2016 (for mock trading session)
2. Saturday, July 02, 2016 (for re login session)
3. Monday, July 04, 2016 (for live trading session)
4. Tuesday, July 05, 2016 (for live trading session)

Gateway IP Addresses	Port Number
172.18.12.41	10810
172.18.12.42	
172.18.12.43	
172.18.12.44	
172.18.12.45	
172.18.12.46	

B. Configuration for login to Primary site on Thursday, July 07, 2016

Gateway IP Addresses	Port Number
172.19.12.41	10810
172.19.12.42	
172.19.12.43	
172.19.12.44	
172.19.12.45	
172.19.12.46	