

**NATIONAL STOCK EXCHANGE OF INDIA LIMITED**

**DEPARTMENT : FUTURES & OPTIONS**

Download Ref No : NSE/FAOP/32150	Date : April 04, 2016
Circular Ref. No : 036/2016	

All Members,

**Live trading sessions from Disaster Recovery (DR) site**

The Exchange shall be conducting trading sessions (Mock & Live) from its **Disaster Recovery (DR) site** as per the following schedule:

<b>Date</b>	<b>Trading sessions</b>	<b>Location &amp; Configuration</b>	<b>Schedule &amp; Instructions</b>
April 09, 2016	Mock Trading	Disaster Recovery (DR) TAP configuration (Annexure 1)	Annexure 2
April 11, 2016	Live Trading		Annexure 3
April 12, 2016			
April 13, 2016	Live Trading	Primary site TAP configuration (Annexure 4)	-

**Important instruction for members:**

- **Kindly participate actively in the mock trading session to check the connectivity and to avoid login problems in live trading sessions from DR site.**
- Members are requested to refer to Annexure 5 for parameters to Login without TAP (Direct)
- The Connect2NSE and Extranet facility will not be available for members
  - From 10 pm on Friday, April 08, 2016 to 6:30 pm on Saturday, April 09, 2016.
  - From 10 pm on Tuesday, April 12, 2016 to 07:00 am. on Wednesday, April 13, 2016
- Vsat/Lease-line members are requested to connect to below mentioned IP address for Extranet from April 09, 2016 to April 12, 2016.  
Extranet - 172.18.125.71
- Co-location facility and Tick by Tick (TBT) feed shall be available. TBT feed will be available on the same Production IP's. There will not be any change in the IP's for accessing TBT feed for the mock.New/revised announcements with respect to mock trading on April 09, 2016 and live trading on April 11, 2016 and April 12, 2016, if any, shall be available on the website [www.nseindia.com](http://www.nseindia.com).

- In case of any queries please call on Toll Free no: 1800 266 00 53.

**For and on behalf of  
National Stock Exchange of India Limited**

**Khushal Shah  
Chief Manager**

<b>Toll Free No</b>	<b>Fax No</b>	<b>Email id</b>
1800-266-00-53	+91-22-26598449	<a href="mailto:fotrade@nse.co.in">fotrade@nse.co.in</a>

## Annexure – 1

**TAP configuration for login to DR site on the following days:**

- 1. Saturday, April 09, 2016 (for mock trading session)**
- 2. Saturday, April 09, 2016 (for re login session)**
- 3. Monday, April 11, 2016 (for live trading session)**
- 4. Tuesday, April 12, 2016 (for live trading session)**

### INTEGRATED WINDOWS TAP CONFIGURATION

- 1) Start TCMS.
- 2) Under the menu bar, select the TAB named 'TAP'.
- 3) Go to TAP Configuration and select the market segment you want to configure.
- 4) In the configuration dialog, selecting "BCP" Radio Button, your screen will look like this:

FO - Configuration

Broker ID : 18

TAP Configuration

Box ID : 18

Local IP : 172 . 17 . 16 . 174

WAN IP : 172 . 17 . 16 . 174

TAP Port : 9602

FIX Port : 9652

Host Configuration

Primary  BCP  DEV

TAP will connect to BCP Environment.

Save Exit

- 5) On Save click, under BCP  
Prompt below is just a confirmation asked when respective TAP is running.

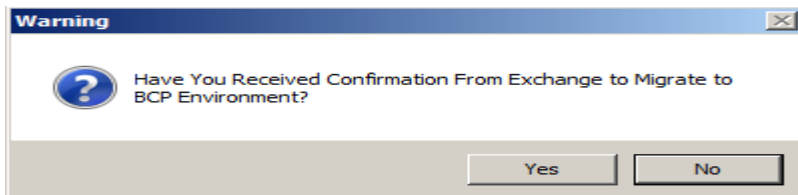
Warning

TAP will restart to take changes into effect. Do you want to continue?

Yes No

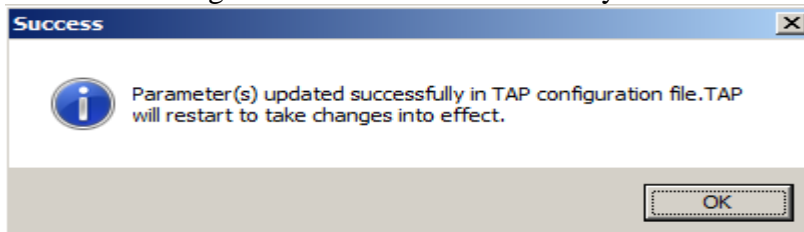
Select Yes.

- 6) Confirmation to save configuration for BCP environment.



Select Yes

- 7) On successful modification, TCMS user will get a response “**Parameter(s) updated successfully in Tap configuration file**” for that particular market. Thus indicating that the changes made are reflected correctly.



## INTEGRATED LINUX TAP CONFIGURATION

- 1) Start the TCMS.
- 2) Select option TAP configuration Menu.
- 3) Then select particular market type, in which you want to make the changes (e.g FO).
- 4) To connect to BCP environment please select the option ‘Switch to BCP Configuration’

```
***** [ TAP CM Configuration Menu ] *****

Broker ID.....[1234]

1. Local IP.....[172.17.16.253]
2. WAN IP.....[172.17.16.253]
3. Box ID.....[33]
-. TAP Port.....[9601] (Not Configurable).
-. FIX Port.....[9651] (Not Configurable).
-. PRIMARY Configuration.          [Current Configuration].
6. Switch to BCP Configuration.
7. Switch to Development Configuration.
8. Connection Type.[Lease Line]
9. Change Broker_ID.
-. Save.
-. Save & exit.
0. Exit.
*****

Enter parameter number to modify : 6

Have You Received Confirmation From Exchange to Migrate to BCP Environment.

Do you want to continue (Y/N)? : y

***** [ TAP CM Configuration Menu ] *****

Broker ID.....[1234]

1. Local IP.....[172.17.16.253]
2. WAN IP.....[172.17.16.253]
3. Box ID.....[33]
-. TAP Port.....[9601] (Not Configurable).
-. FIX Port.....[9651] (Not Configurable).
5. Switch to Primary Configuration.    [Current Configuration].
-. BCP configuration.*
7. Switch to Development Configuration.
8. Connection Type.[Lease Line]
9. Change Broker_ID.
10. Save.
11. Save & exit.
0. Exit without saving.
*****
```

5) Then select 'Save' or 'Save & Exit'.

```

***** [ TAP CM Configuration Menu ] *****

Broker ID.....[1234]

1. Local IP.....[172.17.16.253]
2. WAN IP.....[172.17.16.253]
3. Box ID.....[33]
-. TAP Port.....[9601] (Not Configurable).
-. FIX Port.....[9651] (Not Configurable).
5. Switch to Primary Configuration.      [Current Configuration].
-. BCP configuration.*
7. Switch to Development Configuration.
8. Connection Type.[Lease Line]
9. Change Broker_ID.
10. Save.
11. Save & exit.
0. Exit without saving.
*****

Enter parameter number to modify : 10

Parameter(s) updated successfully in TAP configuration file.

***** [ TAP CM Configuration Menu ] *****

Broker ID.....[1234]

1. Local IP.....[172.17.16.253]
2. WAN IP.....[172.17.16.253]
3. Box ID.....[33]
-. TAP Port.....[9601] (Not Configurable).
-. FIX Port.....[9651] (Not Configurable).
5. Switch to Primary Configuration.
-. BCP configuration.      [Current Configuration].
7. Switch to Development Configuration.
8. Connection Type.[Lease Line]
9. Change Broker_ID.
-. Save.
-. Save & exit.
0. Exit.
*****

```

**Members are requested to verify following “Route” entries on their TAP server to ensure successful login at BCP site.**

Network Address	Netmask	Gateway Address
172.18.0.0	255.255.0.0	<gateway>

- Gateway address IP must be - TAP IP minus 1, which means, the last digit of the IP minus 1. Example:- If TAP Server IP is 10.222.10.2 then Gateway IP should be 10.222.10.1.

## Annexure – 2

### Schedule and Important instructions for Mock trading session on Saturday, April 09, 2016

Activity	Time (hrs.)
Normal Market open time	10:15
Normal Market close time	15:30
Position Limit/Collateral value Set up cut off time	15:40
Trade modification end time / Exercise Market Close time	15:40
Live Re-login start time	17:30
Live Re-login close time	18:00

#### Important Instruction for members:

- Trades resulting from mock trading session on Saturday, April 09, 2016 shall not attract any obligation in terms of funds and/or securities pay-in and/or pay-out. Kindly do not transfer any data files for this session.

### Annexure – 3

**Schedule for live trading sessions on Monday, April 11, 2016 and Tuesday, April 12, 2016 from Disaster Recovery Site**

<b>Regular Market Timing (there is no change to this)</b>	<b>Time</b>
Normal Market open time	09:15 hrs.
Normal Market close time	15:30 hrs.
Position Limit/Collateral value Set up cut off time	16:15 hrs.
Trade modification end time	16:15 hrs.

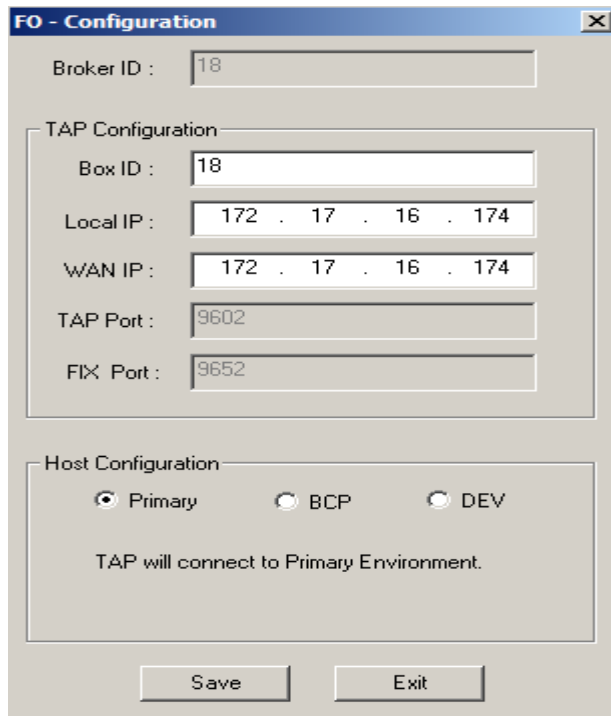


## Annexure – 4

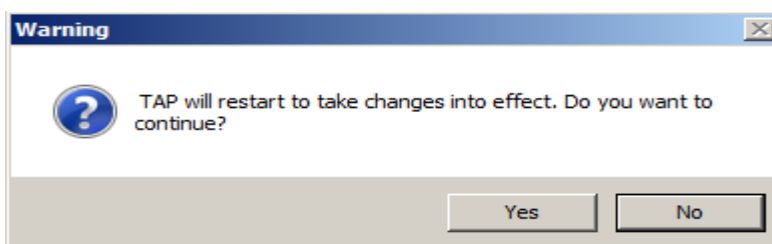
### TAP configuration for login to Primary site on Wednesday, April 13, 2016.

#### a. INTEGRATED WINDOWS TAP CONFIGURATION

- 1) Start TCMS.
- 2) Under the menu bar, select the TAB named 'TAP'.
- 3) Go to TAP Configuration and select the market segment you want to configure.
- 4) In the configuration dialog, selecting 'Primary' Radio Button, your screen will look like this:

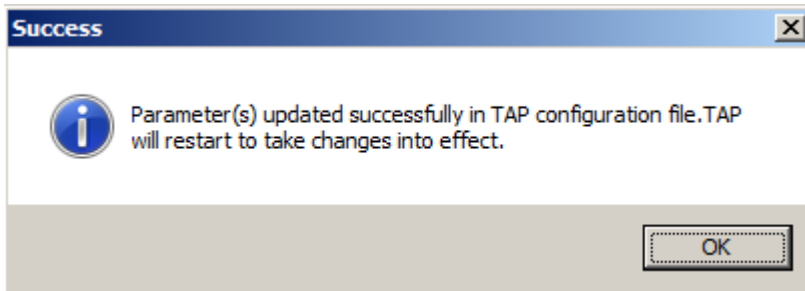


- 5) On Save click,  
Prompt below is just a confirmation asked when respective TAP is running.



Select 'Yes'

- 6) On successful modification, TCMS user will get a response "**Parameter(s) updated successfully in Tap configuration file**" for that particular market as shown in the fig. below. Thus indicating that the changes made are reflected correctly.



## b. INTEGRATED LINUX TAP CONFIGURATION

- 1) Start the TCMS.
- 2) Select option TAP configuration Menu.
- 3) Then select particular market type, in which you want to make the changes
- 4) To connect to Primary environment please select the option 'Switch to Primary Configuration'

```
***** [ TAP CM Configuration Menu ] *****

Broker ID.....[1234]

1. Local IP.....[172.17.16.253]
2. WAN IP.....[172.17.16.253]
3. Box ID.....[33]
-. TAP Port.....[9601] (Not Configurable).
-. FIX Port.....[9651] (Not Configurable).
5. Switch to Primary Configuration.
-. BCP configuration. [Current Configuration].
7. Switch to Development Configuration.
8. Connection Type.[Lease Line]
9. Change Broker_ID.
-. Save.
-. Save & exit.
0. Exit.
*****

Enter parameter number to modify : 5

***** [ TAP CM Configuration Menu ] *****

Broker ID.....[1234]

1. Local IP.....[172.17.16.253]
2. WAN IP.....[172.17.16.253]
3. Box ID.....[33]
-. TAP Port.....[9601] (Not Configurable).
-. FIX Port.....[9651] (Not Configurable).
-. PRIMARY Configuration.*
6. Switch to BCP Configuration. [Current Configuration].
7. Switch to Development Configuration.
8. Connection Type.[Lease Line]
9. Change Broker_ID.
10. Save.
11. Save & exit.
0. Exit without saving.
*****
```

- 5) Then select 'Save' or 'Save & Exit'.

```
***** [ TAP CM Configuration Menu ] *****

Broker ID.....[1234]

1. Local IP.....[172.17.16.253]
2. WAN IP.....[172.17.16.253]
3. Box ID.....[33]
-. TAP Port.....[9601] (Not Configurable).
-. FIX Port.....[9651] (Not Configurable).
-. PRIMARY Configuration.*
6. Switch to BCP Configuration. [Current Configuration].
7. Switch to Development Configuration.
8. Connection Type.[Lease Line]
9. Change Broker_ID.
10. Save.
11. Save & exit.
0. Exit without saving.
*****

Enter parameter number to modify : 10

Parameter(s) updated successfully in TAP configuration file.

***** [ TAP CM Configuration Menu ] *****

Broker ID.....[1234]

1. Local IP.....[172.17.16.253]
2. WAN IP.....[172.17.16.253]
3. Box ID.....[33]
-. TAP Port.....[9601] (Not Configurable).
-. FIX Port.....[9651] (Not Configurable).
-. PRIMARY Configuration. [Current Configuration].
6. Switch to BCP Configuration.
7. Switch to Development Configuration.
8. Connection Type.[Lease Line]
9. Change Broker_ID.
-. Save.
-. Save & exit.
0. Exit.
*****
```

**Annexure – 5**

**Parameters to Login without TAP (Direct)**

**A. Configuration for login to DR site on the following days:**

- 1. Saturday, April 09, 2016 (for mock trading session)**
- 2. Saturday, April 09, 2016 (for re login session)**
- 3. Monday, April 11, 2016 (for live trading session)**
- 4. Tuesday, April 12, 2016 (for live trading session)**

<b>Gateway IP Addresses</b>	<b>Port</b>
172.18.13.41	10820
172.18.13.42	
172.18.13.43	
172.18.13.44	
172.18.13.45	
172.18.13.46	
172.18.13.47	
172.18.13.48	
172.18.13.49	
172.18.13.50	
172.18.13.51	
172.18.13.52	
172.18.13.53	
172.18.13.54	
172.18.13.55	
172.18.13.56	
172.18.13.57	
172.18.13.58	
172.18.13.59	

**B. Configuration for login to Primary site on Wednesday, April 13, 2016**

<b>Gateway IP Addresses</b>	<b>Port</b>
172.19.13.41	10820
172.19.13.42	
172.19.13.43	
172.19.13.44	
172.19.13.45	
172.19.13.46	
172.19.13.47	
172.19.13.48	
172.19.13.49	
172.19.13.50	
172.19.13.51	
172.19.13.52	
172.19.13.53	
172.19.13.54	
172.19.13.55	
172.19.13.56	
172.19.13.57	
172.19.13.58	
172.19.13.59	